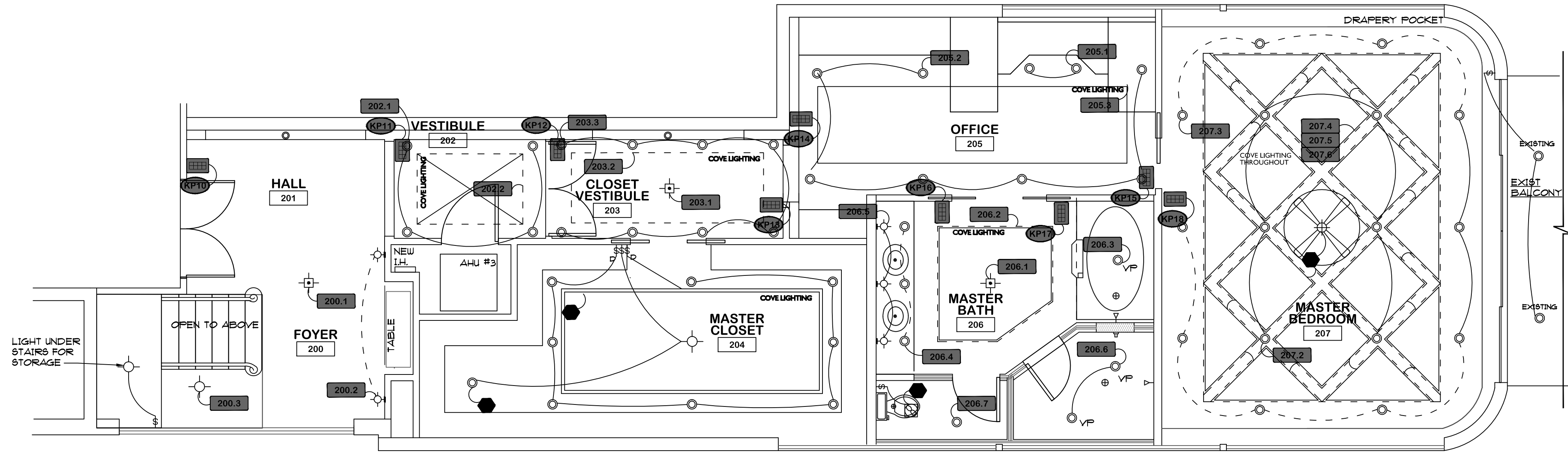
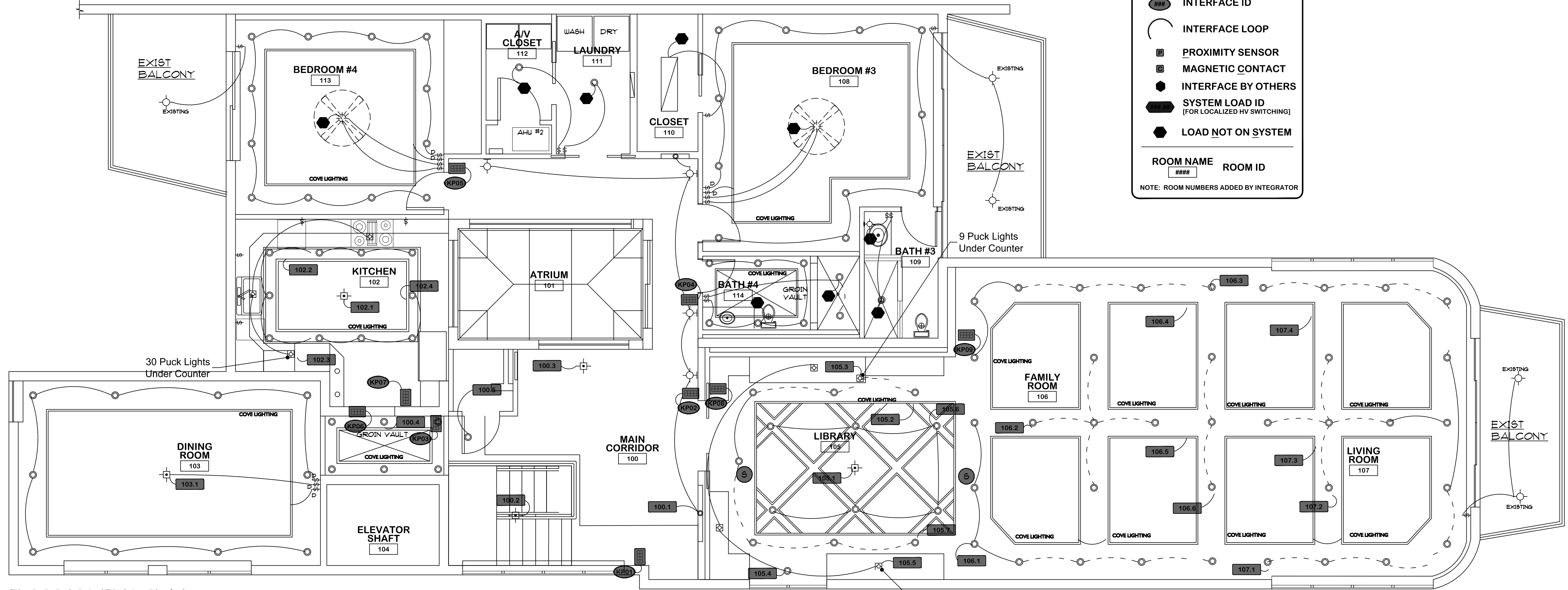


ELECTRICAL SYMBOLS			
	DUPLEX RECEPTACLE AT 8' AFF.		SWITCH SINGLE POLE
	DUPLEX RECEPTACLE WITH GFI		SWITCH THREE WAY
	DUPLEX RECEPTACLE AT BASE		SWITCH FOUR WAY
	DUPLEX RECEPTACLE AT 8' ADV. COUNTER		SWITCH RHEOSTAT
	DUPLEX RECEPTACLE GROUND FAULT		SWITCH DIMMER
	DUPLEX RECEPTACLE TOP REG. SWITCHED		SWITCH KEYED
	DUPLEX RECEPTACLE UNDER COUNTER		SWITCH DISCONNECT
	DUPLEX RECEPTACLE WATER PROOF		SECURITY KEY PAD
	DUPLEX RECEPTACLE AT 8' ADV. COUNTER		GARAGE DOOR CONTROL PAD (1 FOR EA. DOOR)
	DUPLEX RECEPTACLE AT 8' ADV. COUNTER		GARAGE DOOR SENSOR BEAM
	DUPLEX RECEPTACLE AT 8' ADV. COUNTER		DOOR BELL
	DUPLEX RECEPTACLE AT 8' ADV. COUNTER		INTERCOM AT 8' AFF.
	DUPLEX RECEPTACLE AT 8' ADV. COUNTER		INTERCOM BASE STATION
	DUPLEX RECEPTACLE AT 8' ADV. COUNTER		PRE-WIRED TELEVISION CABLE SATELLITE JACK
	DUPLEX RECEPTACLE AT 8' ADV. COUNTER		CHIME BOX
	DUPLEX RECEPTACLE AT 8' ADV. COUNTER		TELEPHONE OUTLET AT 8' AFF.
	DUPLEX RECEPTACLE AT 8' ADV. COUNTER		TELEPHONE OUTLET FLUSH IN FLOOR
	DUPLEX RECEPTACLE AT 8' ADV. COUNTER		INTERNET CABLE MODEM AT 8' AFF.
	DUPLEX RECEPTACLE AT 8' ADV. COUNTER		SPEAKER IN CLG.
	DUPLEX RECEPTACLE AT 8' ADV. COUNTER		HARD WIRED SMOKE ALARM
	DUPLEX RECEPTACLE AT 8' ADV. COUNTER		HVAC THERMOSTAT
	DUPLEX RECEPTACLE AT 8' ADV. COUNTER		THERMOSTAT/HUMIDISTAT
	DUPLEX RECEPTACLE AT 8' ADV. COUNTER		EXHAUST FAN
	DUPLEX RECEPTACLE AT 8' ADV. COUNTER		EXHAUST FAN W/ LIGHT
	DUPLEX RECEPTACLE AT 8' ADV. COUNTER		PADDLE FAN W/ OR W/O LIGHT
	DUPLEX RECEPTACLE AT 8' ADV. COUNTER		INCANDESCENT LIGHT CLG. MOUNTED
	DUPLEX RECEPTACLE AT 8' ADV. COUNTER		GLOBE LIGHT
	DUPLEX RECEPTACLE AT 8' ADV. COUNTER		MOBION SENSOR LIGHTS
	DUPLEX RECEPTACLE AT 8' ADV. COUNTER		220 V. RECEPTACLE AT 24' AFF.
	DUPLEX RECEPTACLE AT 8' ADV. COUNTER		DUPLEX RECEPTACLE FLUSH IN FLOOR
	DUPLEX RECEPTACLE AT 8' ADV. COUNTER		JUNCTION BOX
	DUPLEX RECEPTACLE AT 8' ADV. COUNTER		HI-HAT CLG. MOUNTED
	DUPLEX RECEPTACLE AT 8' ADV. COUNTER		HI-HAT VAPOR PROOF
	DUPLEX RECEPTACLE AT 8' ADV. COUNTER		RECESSED WALL WASHER
	DUPLEX RECEPTACLE AT 8' ADV. COUNTER		SEMI-RECESSED WALL WASHER
	DUPLEX RECEPTACLE AT 8' ADV. COUNTER		INCANDESCENT LIGHT WALL MOUNTED
	DUPLEX RECEPTACLE AT 8' ADV. COUNTER		WALL SCONCE
	DUPLEX RECEPTACLE AT 8' ADV. COUNTER		TRACK LIGHT
	DUPLEX RECEPTACLE AT 8' ADV. COUNTER		FLUORESCENT LIGHT FIXTURE
	DUPLEX RECEPTACLE AT 8' ADV. COUNTER		PIER MOUNTED LIGHT FIXTURE
	DUPLEX RECEPTACLE AT 8' ADV. COUNTER		EMERGENCY LIGHTS
	DUPLEX RECEPTACLE AT 8' ADV. COUNTER		SECURITY, FLOOD LIGHTS
	DUPLEX RECEPTACLE AT 8' ADV. COUNTER		BREAKER PANEL
	DUPLEX RECEPTACLE AT 8' ADV. COUNTER		F.P.L. METER & DISC.
	DUPLEX RECEPTACLE AT 8' ADV. COUNTER		CHANDLER



1ST FLOOR LIGHTING PLAN

1/4"=1'-0"



2ND FLOOR LIGHTING PLAN

1/4"=1'-0"

LEGEND

- ###-## SYSTEM LOAD ID
- ###-## SYSTEM LOAD ID (ON ARC-FAULT CIRCUIT (ACFI))
- ###-## SYSTEM LOAD ID (ON EMERGENCY GENERATOR)
- ### INTERFACE LOCATION
- ### INTERFACE ID
- ### INTERFACE LOOP
- ### PROXIMITY SENSOR
- ### MAGNETIC CONTACT
- ### INTERFACE BY OTHERS
- ### SYSTEM LOAD ID (FOR LOCALIZED HV SWITCHING)
- ### LOAD NOT ON SYSTEM

ROOM NAME ROOM ID

NOTE: ROOM NUMBERS ADDED BY INTEGRATOR

Contractor shall check and verify all dimensions at the building site, and report any discrepancies to the Architect immediately.

REVISIONS:

SHEET CONTENTS:
HIGH VOLTAGE

PROJECT ADDRESS:
YEARS RESIDENCE:
2155 S. OCEAN BLVD
UNIT 10
DELRAY BEACH, FL

DATE: 01-10-2011
SCALE: 1/4"=1'-0"
DRAWN BY: Andrew Slack
CHECKED BY:

AMES BENNETT & ASSOCIATES
ARCHITECTURE
OF PALM BEACH, FLORIDA

This document has been prepared by, or under the responsible supervision of

AMES BENNETT, AIA, NCARB
Registered Architect
Florida # AR200192

AMES BENNETT & ASSOCIATES, P.A.
217 Peruvian Avenue Suite 4
Palm Beach, Florida 33480
Florida # AAC00108
Office: (561) 655-0555
Fax: (561) 655-1232

SHEET NO.
5.3
AD2 OF AD3 SHEETS

JOB NO.
10-107